



10409 MEECH AVENUE, CLEVELAND, OH, U.S.A. 44105
(1) 216-641-8310 • FAX: (1) 216-441-2459

MILLENNIUM LOAD BANK

200-400 KW

200-400 KW PORTABLE LOAD BANK

- Portable, for Load Testing at Multiple Sites
- Compact, Easy to Transport and Operate
- Large Load Capacity – up to 400 KW
- Rugged Aluminized Steel Enclosure with Casters
- Convenient Operator Controls with Digital Metering Standard



The Avtron Millennium Load Bank is a portable, self-contained unit that simulates electrical loads. It is ideal for routine load testing of standby diesel generating systems or for factory production line testing of (UPS) Uninterruptible Power Supplies, turbines, or engine generator sets. This model provides resistive loading up to 400 KW at either 240/480 VAC, 480 VAC, or 600 VAC in a convenient, and easy-to-use package.

The load bank features horizontal air discharge to provide a low profile design for easy entry into areas such as parking garages. The unit is simple to set up and operate by a single technician, saving valuable time in the field. An optional control power transformer is also available for sites where 120 VAC power is not readily available.

The Millennium load bank incorporates state-of-the-art design features, including a heavy gauge aluminized steel enclosure, continuously supported resistor elements on stainless steel rods, and an industrial blower. Legendary Avtron quality combined with simple operation and maintenance will provide years of trouble free service.

The Avtron Millennium Load Bank is ideal for routine testing and maintenance of AC power sources such as emergency stand-by generators and UPS systems.

Avtron's extensive load bank products are solid performers and are used the world over at thousands of sites.

For total support and information on Avtron's products, please contact your Avtron sales representative at (216) 641-8310.

MILLENNIUM LOAD CAPACITY RATINGS

Total Load KW	Voltage	Load Step Resolution KW
200	240/480	5, 10, 10, 25, 50, 100
250	240/480	5, 10, 10, 25, 50, 50, 100
400	240/480	5, 10, 10, 25, 50, 100, 100, 100
400	480	5, 10, 10, 25, 50, 100, 100, 100
400	600	5, 10, 10, 25, 50, 100, 100, 100

MILLENNIUM LOAD BANK SPECIFICATIONS

CONSTRUCTION: A rugged aluminized steel enclosure with screened inlet and exhaust openings houses the Millennium load bank. Two fixed and two lockable swivel casters provide mobility. Lifting eyes, forklift channels, and tie-down hooks are standard.

CONTROL POWER: The Millennium load bank requires control power of 120 VAC, 1-Phase, 60 Hz (control transformer optional).

COOLING: The resistive elements are air-cooled by an integrally mounted three-phase blower (250 KW or 400 KW unit) or a single-phase blower rated 120 VAC (200 KW unit).

CONTROLS/METERING: The operator control panel includes a MASTER LOAD ON-OFF switch, load step ON-OFF industrial toggle switches, BLOWER ON-OFF push buttons with a BLOWER FAILURE light, and BLOWER AND LOAD VOLTAGE selector switches (dual-voltage

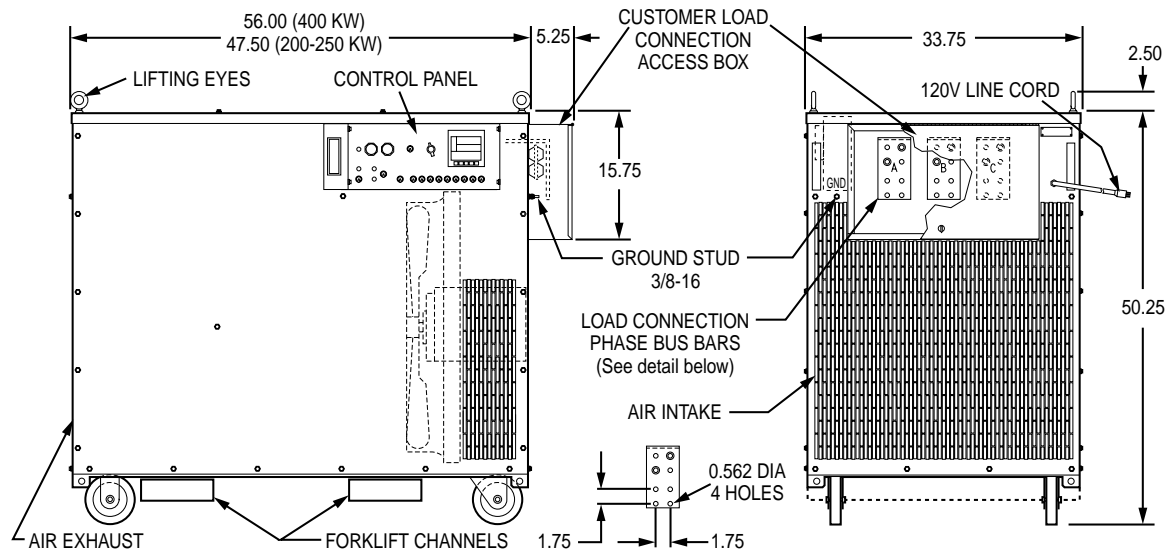
units only). A digital power metering unit to measure volts, amps, frequency, and KW is standard.

SAFETY CIRCUITS: The Millennium load bank features branch circuit fusing on all load steps. Wrong voltage protection, motor overload protection, overtemperature protection, and cooling air loss protection are also provided.

WEIGHT: Approximately 785 pounds (400 KW)
Approximately 650 pounds (200 - 250 KW)

OPTIONS:

- Control Power Transformer
- Vinyl Storage Dust Cover
- Optional 380 VAC, 50 Hz Designs Also Available
- Optional 400 Hz or DC Designs Also Available



All dimensions are in inches.
Specifications subject to change without notice.
Printed in U.S.A. Rev. C



10409 MEECH AVE., CLEVELAND, OH, U.S.A. 44105 • (1) 216-641-8310 • FAX: (1) 216-441-2459

E-MAIL: LBsales@avtron.com • HOME PAGE: www.load-bank.com