

# ComRent International

LOAD BANK RENTALS AND SALES

## Reactive Load Banks — 225 & 300kVAR

### Great For Testing Generators & UPS Systems at Less Than Unity Power Factor:

- **Portable For Rental Applications**
- **Designed for Continuous Operation**
- **Non-Saturating Iron Core Reactors**
- **208-240/480 Voltages**



The K841 Reactive Load Bank is Ideal For Power Factor Tests Requiring less than 225kVAR (Pictured Above) or 300KVAR.

► The Avtron Model K841 is a reactive load bank designed to be used in conjunction with a resistive load bank to provide loading of AC power sources at less than unity power factor. This type of testing is necessary to provide a true test of actual generator output.

► The K841 is available in balanced 3-phase loads of 150, 188, 191, 225, 228, 300 and 375KVAR at 240 or 480 volts. These units are available with different size load steps, depending on customer requirements. The typical load steps are 3.75, 7.5, 9.38, 18.8, and 37.5 KVAR. An optional, continuously variable, 0-3.75 KVAR load adjustment is available.

► These load banks contain iron core reactors and a blower motor housed in a rigid structure of formed heavy gauge steel and are designed for indoor or outdoor installation. The outdoor units are equipped with two hoods mounted on each end of the load bank and screens that cover the inlet opening in the bottom of the unit. Channels are provided in the base structure to facilitate handling by a fork lift truck.

ComRent International is your complete source world wide for load bank rentals, sales, and refurbishments. Products include:  
Load Banks 1kW – 30mW • Resistive • Reactive • Capacitive • 1–1000 VDC • Electronic Loads • Power Cables  
Medium Voltage Resistive, Reactive & Capacitive • 4mW @ 4160 VAC • 5mW @ 13.8 kV • 20–30mW @ 11-13.8 kV

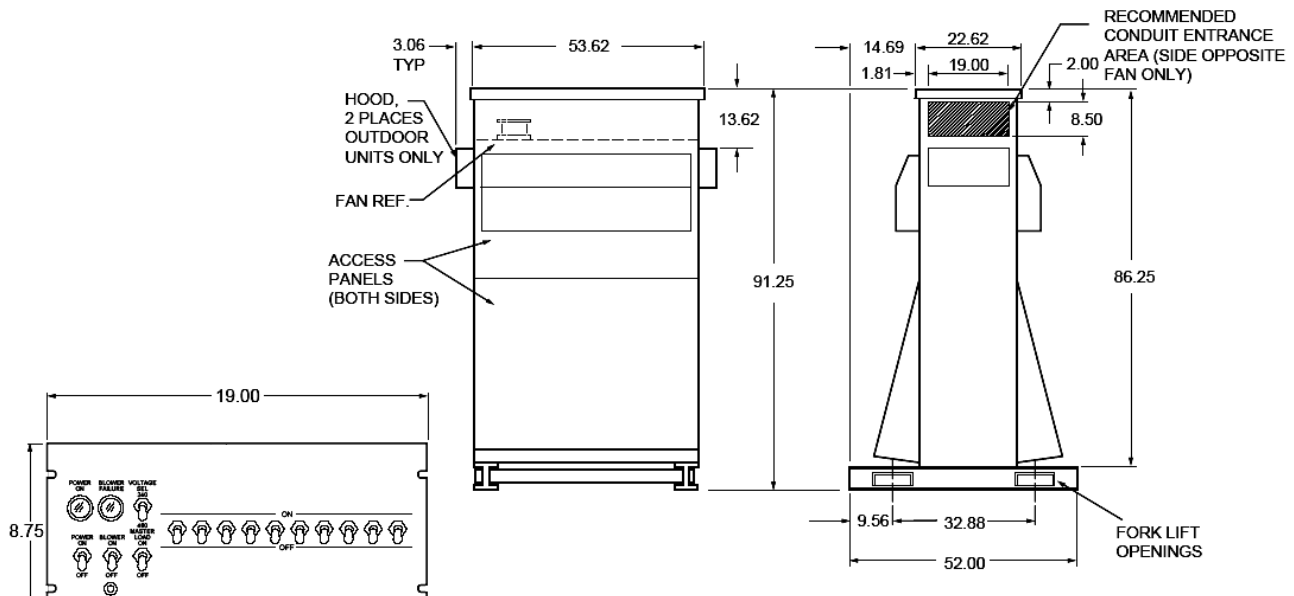
# K841 Ratings And Specifications

Capacity (kVAR)	225, 300kVAR (375kVAR also available)
Voltages (AC)	240/480, 120/208
Frequency	50/60 Hertz
Load Step Resolution	0-3.75 TO 37.5 (Depending Upon Capacity)

- ▶ **CONSTRUCTION:** Heavy-gauge steel enclosure provides a rigid structure. Side panels are removable for interior access and the base of the unit features fork lift channels for simplified handling.
- ▶ **COOLING:** The K841 contains a cooling fan and a cooling air detection circuit. The cooling fan requires a power source of 120 volts, single phase, 60 hertz.
- ▶ **CONTROLS:** The standard 19" rack mount panel includes a POWER ON-OFF switch, a POWER ON light, a BLOWER ON-OFF switch with a BLOWER FAILURE light, a MASTER LOAD ON-OFF switch, and a VOLTAGE SELECTION (if dual voltage unit) and load toggle switches.
- ▶ **CONTROL POWER:** The load bank requires control power of 120 volts, single phase, 60 Hertz.
- ▶ **REACTORS:** The reactors are designed and built with an iron core and air gap combination that limit magnetic flux levels to assure a power factor of less than 0.05 at rated voltage and frequency.
- ▶ **PROTECTION:** The K841 is equipped with thermal switches that drop out the load if an overtemperature condition is detected.
- ▶ **DIMENSIONS/WEIGHT:** 52" L x 52" W x 91.25" H. 4100 pounds (Approximately).

## OPTIONS:

- ▶ 240/48 to 120 Volt Control Transformer
- ▶ 380 to 120 Volt Control Transformer



Specifications subject to change without notice.  
Printed in U.S.A. Rev. A